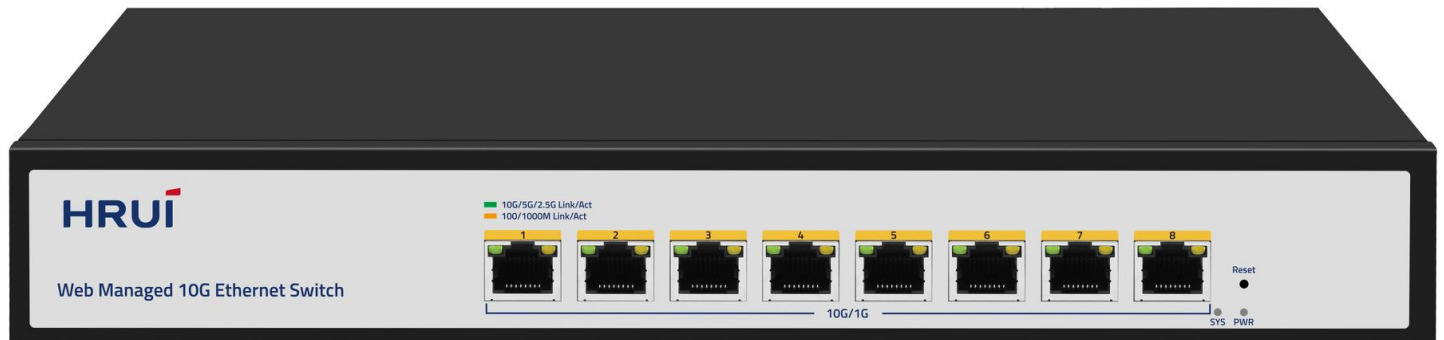


8-port 10G Web Management Switch

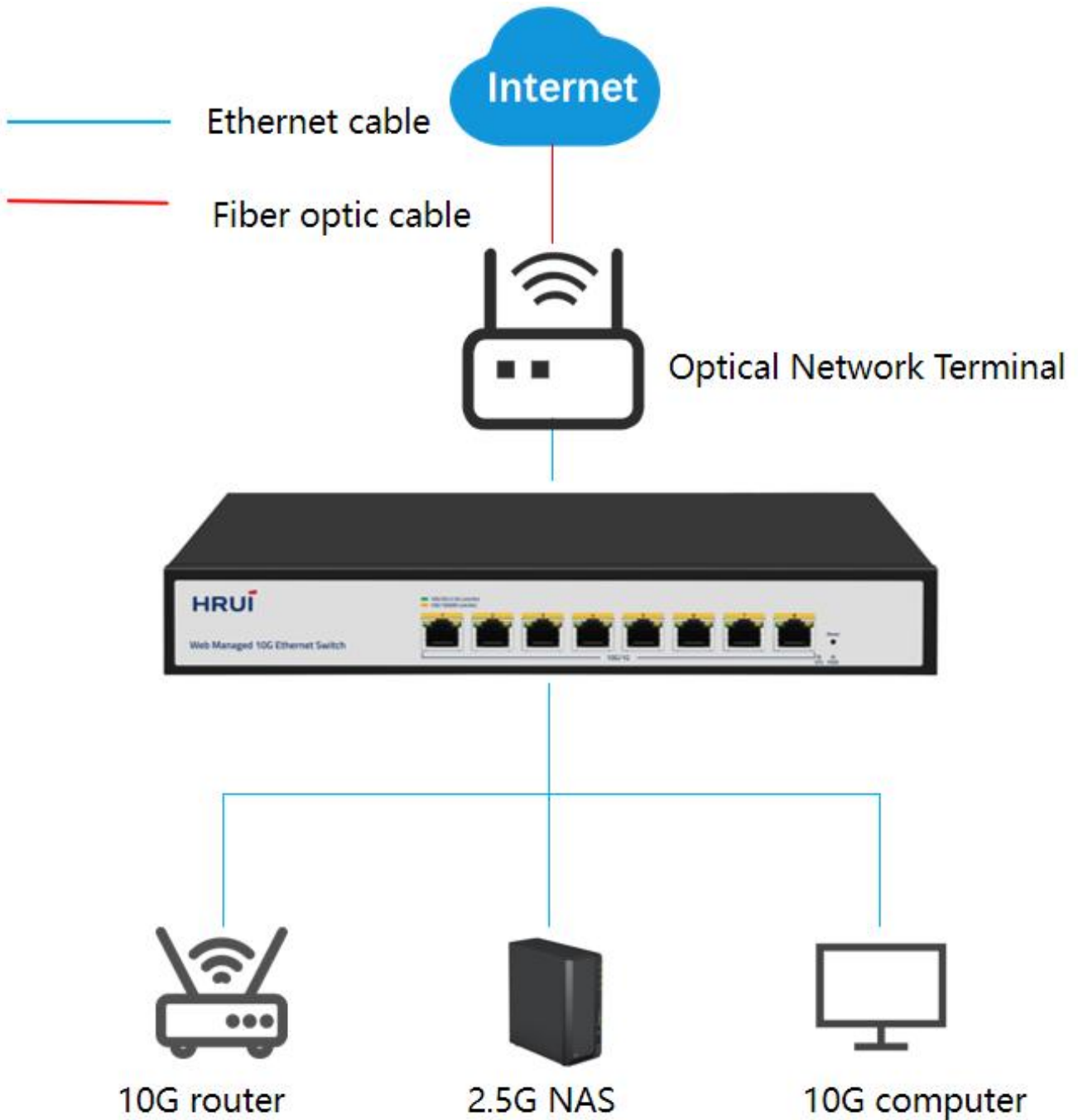


Highlights

- Supports 8 *10 Gigabit RJ45 ports
- Supports IEEE802.3, IEEE802.3u, IEEE802.3x, IEEE802.3ab, IEEE802.3z
- RJ45 port supports 1.25G/2.5G/10G adaptive
- Supports automatic port flipping (Auto MDI/MDIX)
- Adopting a storage and forwarding exchange mechanism
- All ports support line speed switching
- The panel indicator lights will monitor the working status and assist in fault analysis
- Support QoS data priority
- Support web management

Specifications

Product Application



Specifications

| Hardware Features & Performance | | |
|---------------------------------|------------------------|---|
| Model | | HR-SWTGW2C80N |
| General | Interface | 8*10G RJ45 port |
| | Port Standard | IEEE 802.3: Ethernet Media Access Control (MAC) Protocol IEEE 802.3i: 10BASE-T Ethernet IEEE 802.3u: 100BASE-TX Fast Ethernet IEEE 802.3ab: 1000BASE-T Gigabit Ethernet IEEE 802.3z: 1000BASE-X Gigabit Ethernet (Fiber optic) IEEE 802.3x: Flow Control IEEE 802.3az (Efficient and Energy saving Ethernet) IEEE 802.3ae (10 Gigabit Ethernet) IEEE802.3x (Flow Control) IEEE802.3 bz (2.5G/5G Ethernet standard) |
| Performance | Switching Capacity | 160Gbps |
| | Packet Forwarding Rate | 119.04Mpps |
| | Packet Buffer | 12Mbit |
| | MAC Address Table | 16K |
| | Jumbo Frame | support |
| | VLAN | VLAN range 1-4094, maximum active VLAN is 4K |
| | Transmission Method | Store and Forward |
| Environment | Surge Protection | Surge protection: common mode 6KV(Class C) Electrostatic ESD: Air 8KV, Contact 6KV (Class C) |
| | Operating Temperature | 0~40° C |
| | Storage Temperature | -40 ° C to 70 ° C |
| | Operation Humidity | 10%~90%, non condensing |
| | Storage Humidity | 5%~95%, non condensing |

Specifications

| Hardware Features & Performance | | |
|---------------------------------|-----------------------------|--|
| Physical | Power Supply | AC 100–240V 50/60Hz DC 12V 8A |
| | Mainboard Power Consumption | 13.8W |
| | Structure Information | Product Dimensions :320*207*45mm Packaging Dimensions :370*290*85mm Product Net Weight: 1.82KG Product Gross Weight: 2.36KG |
| | Packing Information | Carton Dimensions :445*310*390mm Packing Quantity: 5PCS Packing Weight:12.8KG |
| | Packing List | switch 1pcs, power cord 1pcs, instruction manual 1pcs, certificate of qualification 1pcs |
| | Fan Quantity | 1 |
| | Installation | desktop |
| Buttons & Indicator Lights | PWR | On: Powered on Off: Powered off |
| | 2.5G/5G/10G (Green led) | On: link normal Off: Link blocked Flashing: Data transmitting |
| | SYS | On: The system is normal Flashing: System startup in progress |
| | 100/1000M (Yellow led) | On: link normal Off: Link blocked Flashing: Data transmitting |
| | RESET | Long press for 6 seconds to restore factory settings |

Specifications

| Software Features | |
|------------------------|--|
| L2 Function | |
| Port | Port Switch configuration |
| | Port Speed configuration |
| | Port Duplex configuration |
| | Port Flow Control configuration |
| | EEE |
| | Jumbo Frame |
| Link Aggregation | Supports load balance policy; Base on MAC and IP-MAC |
| | Static and Dynamic Group |
| | LACP |
| | Up to 8 groups |
| Storm Control | Boardcast suppression |
| | Unknown Multicast |
| | Unknown Unicast |
| Port Mirroring | One to one monitor |
| | Many to one monitor |
| | Ingress/Egress/Both |
| | Up to 4 session groups |
| Port Security | MAC Address Constraints |
| | Protect/Restrict/Shutdown |
| Port Isolation | support |
| Port Rate-limit | support |
| VLAN | Access/Trunk/Hybrid |
| | VLAN Tunnel (Q-in-Q Tunnel) |
| | VLAN range 1-4094, maximum active VLAN is 4K |
| MAC Address | Filtering MAC Address |
| | Static MAC address |
| Spanning Tree Protocol | STP/RSTP |
| | BPDU Filter |
| | BPDU Guard |
| | Edge Port |
| LLDP | LLDP |
| | LLDP MED |
| Multicast | IGMP Snooping |
| | Router Port |
| | Static IGMP Join |
| | IGMP V1/V2 |
| QoS | Traffic classification, supporting SP and WRR scheduling |
| | Port Priority |
| | 802.1P Priority |
| | IP DSCP Priority |
| | Priority Remarking |
| | Supports up to 8 queues per port |
| ERPS | Main Ring |

Specifications

| Software Features | |
|--|-----------------------------|
| Services | |
| Access Protocol | HTTP |
| | Session Timeout |
| Security | DHCP Snooping |
| Diagnostics | |
| Copper Test | support |
| Ping | support |
| Equipment Management | |
| Manager Access | HTTP |
| | SNMP |
| Manager IP | Static Address |
| | Manager VLAN |
| | DNS |
| | DHCP Client |
| SNMP | V1/V2C |
| | Community |
| | Trap Host |
| SNMP MIB | RFC 1213 MIB-II |
| | RFC 1643 Ethernet MIB |
| | RFC 2863 Interface MIB |
| User Management | support |
| Firmware Management | Firmware upgrade |
| Configuration Management | Upload/Backup Configuration |
| Save | support |
| Restart | support |
| Factory Defaults | support |
| Standard Compliance | |
| IEEE 802.3x flow control and back pressure | |
| IEEE 802.3ad port trunk with LACP | |
| IEEE 802.1D Spanning Tree Protocol | |
| IEEE 802.1w Rapid Spanning Tree Protocol | |
| IEEE 802.1p Class of Service | |
| IEEE 802.1Q VLAN tagging | |
| RFC 768 UDP | |
| RFC 793 TFTP | |
| RFC 791 IP | |
| RFC 792 ICMP | |
| RFC 2068 HTTP | |
| RFC 1112 IGMP v1 | |
| RFC 2236 IGMP v2 | |
| RFC 3376 IGMP v3 | |

Specifications

Product Pictures



Product Structure Diagram

