

10G Uplink 24* SFP Port Gigabit L3 Managed Fiber Switch



www.hrutech.com

CE FC RoHS

10G Uplink 24* SFP Port Gigabit L3 Managed Fiber Switch, support 24* 1000Mbps SFP Ports, 8*10/100/1000Mbps TP/SFP Ports(Combo), 4* 10G SFP+ Ports, 1*Console Port. Perfect security control strategy and CPU protect policy improve fault tolerance and ensure stable operation of the network and load balancing of the interconnection;

The device supports automatic DoS attack defense and SNMP, IEEE 802.1, STP, RSTP, Link aggregation, and other functions. Advanced security functions and advanced quality of service (QoS), can be used as core layer, distribution layer or access layer switch with high density port, switch stacking and easy management, are ideal for various commercial network applications.

Main Feature

- Support IEEE 802.1d, IEEE 802.1w, IEEE 802.1s, IEEE 802.1p, IEEE 802.3, IEEE 802.3u, IEEE 802.3x, IEEE 802.3z, IEEE 802.3ab, IEEE 802.3ae standard;
- L3 Management, support DHCP Server, QoS, ACL control, support SNMP V1/V2/V3, IGMP Snooping v1/v2;
- Support STP/RSTP/MSTP(ERPS), support loop detection and self-healing, support remote loopback monitoring and control (802.3ah OAM) ;
- Support multiple VLAN division, MAC VLAN, Protocol VLAN, Private VLAN ;
- Support IP address + MAC address + VLAN + Port binding, DHCP Snooping, support IP source and DAI protection;
- Support IPV4/IPV6, RIP, OSPF.
- Surge Protection: common mode 4KV, differential mode 2KV

Application Environment

Metro Optical Broadband Network:

Data network operators such as telecommunications, cable TV, and network system integration,etc.

Broadband private network:

Suitable for financial, government, oil, railway, electric power, public security, transportation, education and other industries

Multimedia transmission:

Integrated transmission of images, voice and data, suitable for remote teaching, conference TV, videophone and other applications

Real-time monitoring:

Simultaneous transmission of real-time control signals, images and data

Specification

I/O Interface

Power	Power Voltage: AC 100-240V/50-60Hz
Ethernet	24* 1000Mbps SFP Ports 8*10/100/1000Mbps TP/SFP Ports(Combo) 4* 10G SFP+ Ports 1* Console Port

Performance

Bandwidth	128Gbps
Packet Forwarding Rate	95.23Mpps
DDR SDRAM	128MB
Flash Memory	16M
Package Cache	12MB
MAC Address	16K
Jumbo Frame	12kbytes
VLANs	4096
Transfer Mode	Storage & Forwarding
MTBF	100000 Hours

Standard

Network Protocol	IEEE802.3 (Ethernet) IEEE802.3u (Rapid Ethernet) IEEE 802.3ab (Gigabit Ethernet) IEEE 802.3z (Gigabit Ethernet Optical Fiber Standard) IEEE 802.3ae (10G Ethernet) IEEE802.3x (Flow Control) IEEE 802.3az (Energy Efficient Ethernet) IEEE 802.3ad (Link Aggregation) IEEE 802.1AB LLDP/LLDP-MED (Link Layer Discovery Protocol) IEEE 802.1D Spanning Tree Protocol(STP) IEEE 802.1w Rapid Spanning Tree Protocol (RSTP) IEEE 802.1s Multiple Spanning Tree Protocol (MSTP) IEEE 802.1Q (Visual LAN) IEEE 802.1p (VLAN Label) IEEE 802.1X (Client/Server Access Control and Authentication Protocol)
------------------	--

Industry Standard	EMI: FCC Part 15 CISPR (EN55032) class A EMS: EN61000-4-2 (ESD) EN61000-4-5 (Surge)
Network Medium	10BASE-T: Cat 3, 4, 5 or above UTP($\leq 100m$) 100BASE-TX: Cat 5 or above UTP($\leq 100m$) 1000BASE-TX: Cat 5 or above UTP($\leq 100m$)
Optical Medium	Multi-mode Fiber: 850nm, 1310nm Transmission Distance: 550m/2Km Single-mode Fiber: 1310nm, 1550nm Transmission Distance: 20/40/60/80/100/120Km
Certification	
Safety Certificate	CE, FCC, RoHS
Environment Standard	
Working Environment	Working Temperature : -10~50°C Storage Temperature : -40~70°C Working Humidity : 10%~90% , non-condensing Storage Temperature : 5%~95% , non-condensing
Physical Specification	
Structure Size	Product Dimensions: 440*205*44mm Package Dimensions: 500*290*85mm Product N.W: 3.06KG Product G.W: 3.63KG
Packing Info	Carton Dimensions: 520*445*310mm Packing Quantity: 5 PCS Packing Weight: 19.15KG
Power Voltage	Voltage: AC 100-240V/50-60Hz power : 12V8A/96W
Power Consumption (Max)	$\leq 38W$
Package List	Ethernet switch: 1 Set, Instruction manual: 1 PCS, Certificate: 1 PCS, Power cord: 1PCS, Serial cable: 1PCS, Rack ear: 1 Pairs
LED Indicator	
PWR(Power Light)	On: Powered on, Off: Powered off

SYS(System Light)	On: System Normal, Flashing: System Starting
Link/ACT (Link/Data Light)	On: Link Connecting, Flashing: Data Transmitting, Off: Link disconnect
L3 Function	
IPv4	IPv4 VLAN Interface
	IPv4 Static Routes
	ARP
IPv6	IPv6 VLAN Interface
	IPv6 Static Routes
	IPv6 ND
RIP	V1/V2
OSPF	Router-ID
	Authentication
L2 Function	
Port	Port Switch
	Port Description
	Port Speed
	Port Duplex
	Port Flow Control
	Jumbo, Up to 10K
	Support 10G/2.5G (2023.3.2)
	Fiber Module(DDM)
Link Aggregation	Supports load balance policy; Base on MAC and IP-MAC
	Static and Dynamic Group
	Supports LACP
	Up to 8 groups
Storm Control	Boardcast
	Unknown Multicast
	Unknown Unicast
Port Mirroring	One to one monitor
	Many to one monitor
	Ingress/Egress/Both
	Up to 4 session groups
Port Security	MAC Address Constraints
	Port Security MAC Address
	Protect/Restrict/Shutdown
Port Isolation	
Port Rate-limit	
Loopback Detection	

VLAN	Access/Trunk/Hybrid
	VLAN Tunnel (Q-in-Q Tunnel)
	Congurable VID from 1 - 4094; Max. 4K static VLAN groups
	Voice VLAN
	MAC VLAN
	Surveillance VLAN
	协议VLAN / Protocol VLAN
	GVRP
MAC Address	Dynamic Address
	Static Address
	Filtering Address
Spanning Tree Protocol	STP/RSTP/MSTP
	BPDU Filter
	BPDU Guard
	Edge Port
LLDP	LLDP
	LLDP MED
Multicast	IGMP Snooping
	IGMP V1/V2/V3
	Router Port
	Static IGMP group address
	IGMP groups filtering
	Querier
	MLD Snooping
	MVR
QoS	Traffic classification based, Strict priority and WRR
	Port Priority
	802.1P Priority
	IP TOS Priority
	IP DSCP Priority
	Supports up to 8 queues per port
	Priority Remarking
Services	
DHCP	DHCP Server
	IP Pool
	Static Binding
	DHCP Relay
	Option 43

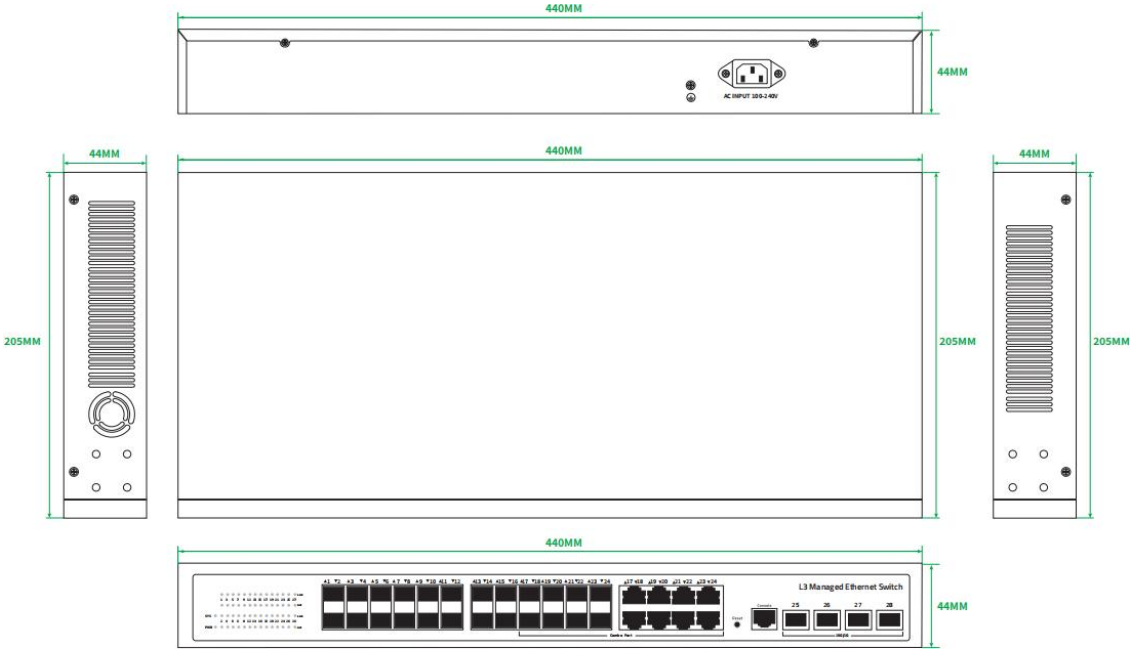
DATASHEET

Access Protocol	HTTP
	HTTPS
	Telnet
	SSHv2
	Manager ACL
	Session Timeout
	Password Retry Count
	Silent Time
Security	
AAA	RADIUS
	TACACS+
	802.1X
	Base on port/MAC/local/WEB
DHCP Snooping	Global/VLAN
	Option 82
	Circuit ID
IP Source Guard	
Dynamic ARP Inspection	
DoS	
ACL	MAC ACL
	IPv4 ACL
	IPv6 ACL
Diagnostics	
Syslog	Logging Message
	Remote Server
Ping	
Traceroute	
Copper Test	
UDLD	
Managemnet	
Manager Access	Console
	HTTP/HTTPS
	Telnet
	SSH
	SNMP
Manager IP	Static Address
	DHCP Client
	Supports IPv4 and IPv6 address
	Manager VLAN
	DNS
Time Synchronization	SNTP
	Manual Time

SNMP	V1/V2C/V3
	Community
	V3 User
	Group
	Trap Host
SNMP MIB	RFC 1213 MIB-II
	RFC 1493 Bridge MIB
	RFC 1643 Ethernet MIB
	RFC 2819 RMON MIB (Groups 1, 2, 3 and 9)
	RFC 2863 Interface MIB
	LLDP
	Private MIB
RMON	Statistics
	History
	Event
	Alarm
User	
Firmware	Firmware Upgrade
Configuration	Upload and download
Save	
Restart	
Factory Defaults	
Standards Compliance	
IEEE 802.3x flow control and back pressure	
IEEE 802.3ad port trunk with LACP	
IEEE 802.1D Spanning Tree Protocol	
IEEE 802.1w Rapid Spanning Tree Protocol	
IEEE 802.1s Multiple Spanning Tree Protocol	
IEEE 802.1p Class of Service	
IEEE 802.1Q VLAN tagging	
IEEE 802.1x Port Authentication Network Control	
IEEE 802.1ab LLDP	
RFC 768 UDP	
RFC 793 TFTP	
RFC 791 IP	
RFC 792 ICMP	
RFC 2068 HTTP	
RFC 1112 IGMP v1	
RFC 2236 IGMP v2	
RFC 3376 IGMP v3	
RFC 2710 MLD v1	
RFC 3810 MLD v2	
RFC 2328 OSPF v2	

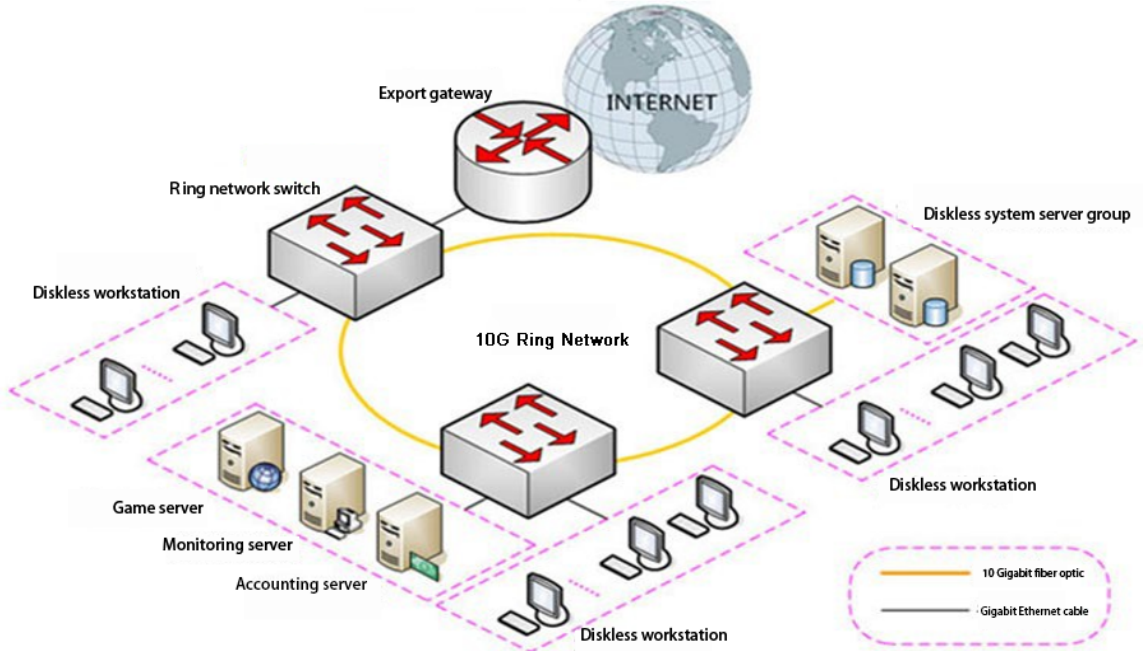
Order Info	
HR-SWTG342408F	10G Uplink 24* SFP Port Gigabit L3 Managed Fiber Switch

Product Structure



Product Application

Solution 1: 10G ring network solution



Solution 2: 10G core + 1G convergence solution

